



MISSOURI BEHAVIORAL HEALTH COUNCIL

# Missouri Year 8 CERTIFIED COMMUNITY BEHAVIORAL HEALTH CLINICS

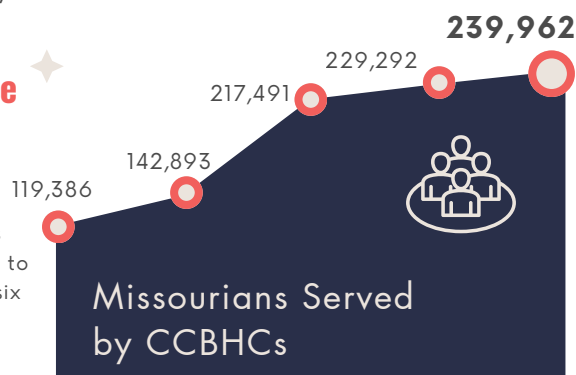
## Operating CCBHCs since 2017

Missouri was one of the original eight demonstration states selected for the CCBHC model, which was enacted by the Excellence in Mental Health and Addiction Treatment Act in 2014, transforming the way behavioral health services are funded and closing the disparity between physical health and behavioral health services. Missouri has CCBHCs serving every county in the state.

### Patient Access to Care

101%

Overall increase in patients served from baseline (2017) to Year 8 (FY25). Onboarded six new CCBHCs in 2023.



Veterans & Active Military Served by CCBHCs  
4,256

Youth Services  
60,924 total youth served in FY25.

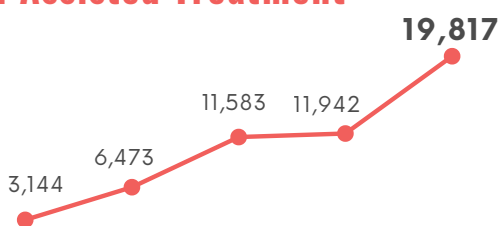
47% of total youth served received a service in school.

### Providing Medication Assisted Treatment

CCBHCs are providing

530%

more patients with medication assisted treatment since 2017.



“The CCBHC model allows providers so many opportunities to strengthen their organizations, offer needed access to behavioral health services to their communities, and bring to fruition goals that would be nearly impossible to realize under a fee-for-service system.”

-NORA BOCK, DIRECTOR, DIVISION OF BEHAVIORAL HEALTH

## Missouri CCBHC Impact

Certified Community Behavioral Health Clinics

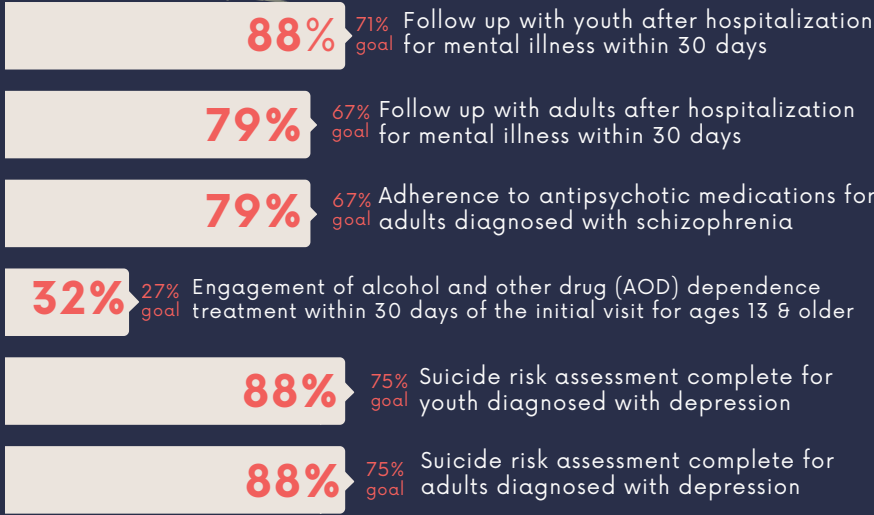
Home	Overview	Total Population	Demographics	Measures
<b>CCBHC Onboarding Dates</b>				
Beacon Mental Health	Jul 2017	→	→	→
Burrell Behavioral Health	Jul 2017	→	→	→
Clark Community Mental Health C.	Jul 2017	→	→	→
Compass Health	Jul 2017	→	→	→
Family Guidance Center	Jul 2017	→	→	→
FCC Behavioral Health	Jul 2017	→	→	→
Mark Twain Behavioral Health	Jul 2017	→	→	→
North Central Missouri Mental He.	Jul 2017	→	→	→
Ozark Center	Jul 2017	→	→	→
Places for People	Jul 2017	→	→	→
Preferred Family Healthcare	Jul 2017	→	→	→
Redeemer	Jul 2017	→	→	→
Sage Health Services	Jul 2017	→	→	→
COMTEA	Jul 2017	→	→	→



Visit our public dashboard available to learn more about CCBHC performance.

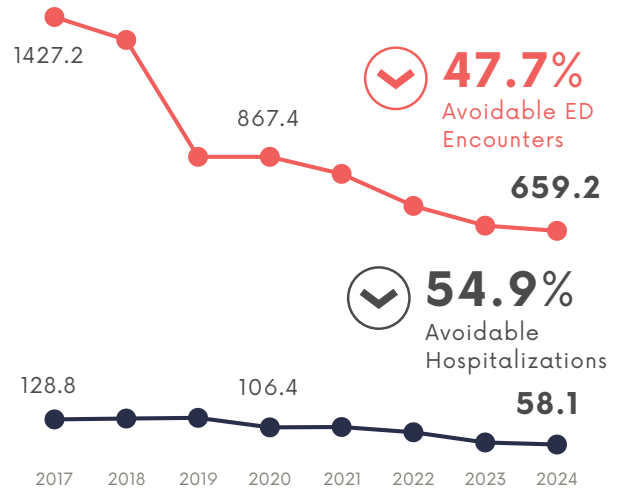
# Value Based Measures

The data below represent the CCBHC Medicaid population receiving the measured intervention.



# Avoiding the Use of Hospitals & EDs

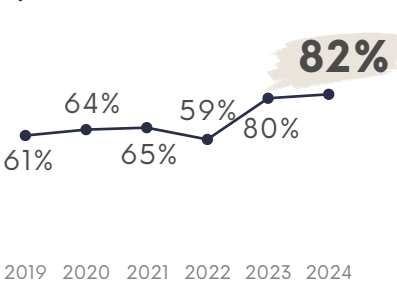
CCBHCs have shown a reduction in the number of **avoidable ED** and **hospital** encounters (per 1,000 member months)



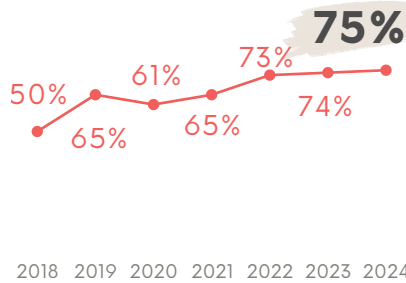
# Measuring Progress & Improvement

The data below represent the CCBHC Medicaid population receiving the measured intervention.

Follow up for youth prescribed ADHD Medications | Initiation Phase

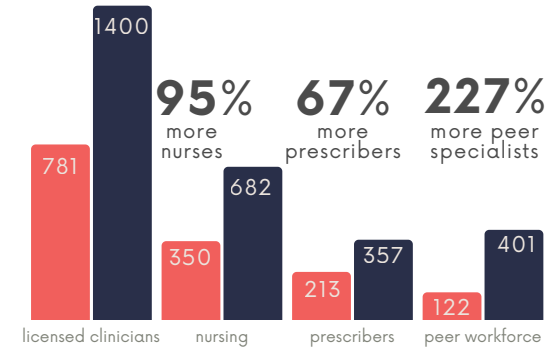


Screening and brief counseling for adults identified with unhealthy alcohol use



# Workforce Recruitment

CCBHCs have seen growth in their care team positions from **baseline** to **Year 8** (FY25).



# Crisis Centers

CCBHCs are operating **24**

Behavioral Health Crisis Centers (BHCC) across the state. BHCCs are an urgent care center for people experiencing a behavioral health crisis.

BHCCs provided care for **55,888** Missourians in Year 8.

**89%** of those individuals were stabilized. The rest either transferred care or left against advice.

# Law Enforcement Collaboration

CCBHCs have partnered with local law enforcement agencies to receive referrals of those in need of behavioral health services. Referrals reported July 2024 - June 2025:



**MISSOURI BEHAVIORAL HEALTH COUNCIL**

This report was prepared by the Missouri Behavioral Health Council using data reported by the Missouri Department of Mental Health, the Missouri Institute of Mental Health, and CCBHCs as of December 2025.