



Upstream Strengthening Children and Families through Prevention and Intervention Strategies



Upstream is a community-based approach that leverages court resources, judicial leadership, and child welfare and juvenile justice agency partnerships to enhance community collaboration through state and local coordination, community mapping, and action planning. This collaboration aims to strengthen communities, prevent child maltreatment and out-of-home placement, reduce court involvement, and support safe and healthy families.

Upstream has a family-centered focus which identifies domains of prevention and intervention where strategies can be used to support safe and healthy families. These domains include:

- Community – What Everyone Needs to Thrive
- Families with Risk Factors
- Families with Allegations of Abuse/Neglect or Delinquency
- Families with Court Involvement

The **Upstream Framework** is inspired by the Sequential Intercept Model (SIM) and informed by the public health model of prevention and weaves together the social determinants of health, risk and protective factors of child abuse and neglect, criminogenic risk and protective factors, and research-based strategies for community engagement. The domains of **Upstream** guide and focus discussions for mapping resources and processes present in the local community. Community mapping is a

What is Upstream?

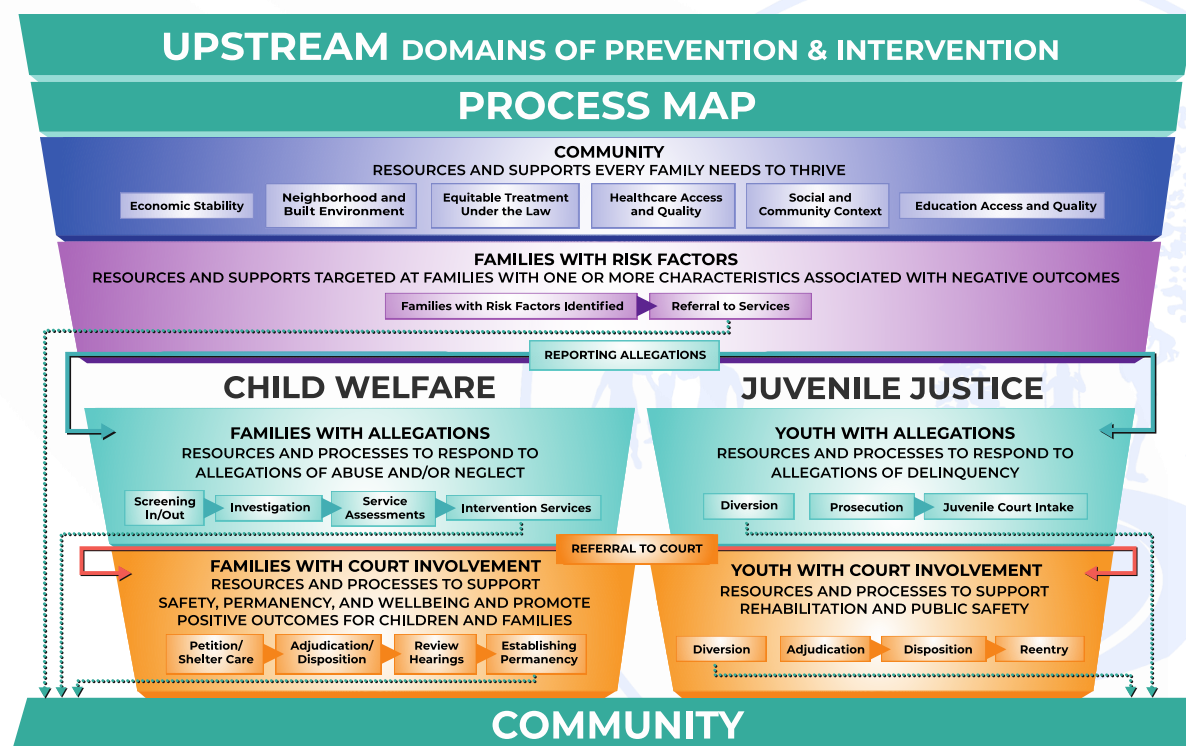


structured process that brings together stakeholders to identify resources, opportunities, and priorities. The process elevates community voice, leverages existing partnerships and initiatives, and results in an action plan. During a mapping workshop, partners identify prevention and intervention strategies already in place, discover opportunities for improvement, and discuss current processes. After community mapping, the stakeholders finalize an action plan to address gaps collaboratively.

The cornerstone of **Upstream** is the support and engagement of state and local stakeholders in community mapping and collaborative efforts.

Upstream provides a structure and process at a state and local level through three phases:

- Leadership Team Planning, Coordination, and Capacity Building
- Training Facilitators to Conduct Local Mapping Workshops
- Local Planning and Collaboration, Local Mapping Workshops, Action Planning, and Implementation



For more information, visit ncsc.org/upstream